



# Seattle, WA (166)

## Pilot Training Program in Internal Family Systems<sup>SM</sup>

### A New Approach to Level 1 and Level 2 Trainings

---

(Revised 10.26.09)

**Internal Family Systems<sup>SM</sup>** is at the forefront of a movement toward a more collaborative therapeutic approach that relies on clients' intuitive wisdom. IFS<sup>SM</sup> is one of the fastest growing psychotherapeutic models in the field today, offering a clear, non-pathologizing, and empowering view of human cognitive and emotional life. IFS provides a dynamic therapeutic approach that allows both therapist and client to enter a transformational relationship in which healing occurs.

### The Internal Family Systems Model

Richard C. Schwartz, PhD, LMFT, has been developing the IFS model over the past 25 years, with IFS now practiced by thousands of licensed therapists and other professionals throughout the United States and internationally. Mental health care professionals and others trained in the IFS model easily integrate it into a wide variety of practices using the unique methods IFS offers to create safe environments for clients to become Self-transforming. Internal Family Systems therapy is a simple yet sophisticated integration of psychology, spirituality, and intra-psychic and family systems theory that:

- works well with couples, families, groups and children;
- effectively heals trauma;
- is a client-led approach that respects each client's pace and goals;
- establishes a productive, trusting and collaborative partnership between therapist and client;
- helps therapists remain centered and open-hearted.

### The Training Program

In addition to thoroughly teaching IFS theory and technique, this IFS training program invites participants to explore their own inner worlds in a safe, nurturing context.

#### In Module 1 participants:

- learn the conceptual framework of the IFS model;
- apply basic IFS techniques to various clinical populations;
- discover the opportunities IFS offers for personal development and enrichment.

#### In Module 2 participants:

- learn and implement the core competencies of an IFS therapist;
- focus on how to work with multi-person systems, emphasizing the treatment of couples yet extrapolating to families, groups, and companies;
- focus on the challenges of treating those who have experienced trauma or who have extremely protective systems;
- explore the importance of the therapeutic relationship and the spiritual aspects of IFS;
- engage in a unique group learning experience, thereby developing personal and professional relationships that can last a lifetime.

**Learning Objectives:** For a complete listing of learning objectives for each session, please contact The Institute for Continuing Education at 800-557-1950 or email: [instconted@aol.com](mailto:instconted@aol.com).

## Format

The Seattle training has two complementary Modules that flow seamlessly from one to the other. The first three weekends of this training comprise Module 1 and the remaining four weekends comprise Module 2. In total, there are seven 3-day weekends (sessions) over the course of about a year (126 training hours).

This training program offers a new and unique opportunity to learn the basic skills and knowledge of the IFS model. Designed to incorporate the curricula of a traditional Level 1 training and the key content areas of a traditional Level 2 training, the Seattle IFS training program will include lectures, experiential exercises, supervised practice and demonstrations of the IFS model.

Note: Completion of Seattle's Module 1 or of a previous traditional IFS Level 1 training program is a prerequisite for attending Seattle's Module 2 (see also "Who May Apply" below). By the end of Module 2, participants will have the knowledge and skills to provide a complete IFS session with clients, including the six steps of healing.

## Certificate of Completion

A Certificate of Completion may be awarded as follows:

- for completion of Module 1 only
- for completion of Module 2 only
- for completion of Module 1 and Module 2

To be eligible for a Certificate of Completion for Module 1 only, a participant must complete 45 of the 54 training hours offered in Module 1.

To be eligible for a Certificate of Completion for Module 2 only, a participant must complete 60 of the 72 training hours offered in Module 2.

To be eligible for a Certificate of Completion for both Module 1 and Module 2, a participant must complete 105 of the 126 training hours offered over the course of the entire training.

*Participants are not certified.*

## Eligibility for Future Trainings

By completing Module 1 only, a participant is eligible to participate in Module 2 of this Seattle training program, but is not eligible to participate in a traditional Level 2 IFS training program.

By completing Module 2, a participant is eligible to apply for a Level 3 IFS training program.

## Trainers

**Lead Trainer, Module 1: Kay Gardner, MA, LCPC**, is a certified Hakomi therapist who incorporates body work into her therapy practice. She is the creator of several workshops, including "Men and Their Mothers" and "Women, Sexuality, and Power."

**Lead Trainer, Module 2: Paul Ginter, EdD**, is a private practice psychologist in Kalamazoo, Michigan. Paul primarily uses the Internal Family Systems model in his work with individuals, couples and families. He is particularly interested in incorporating spiritual practices such as meditation into his work with clients.

**Assistant Trainer, Module 1 and 2: Bill Nagahiro, PhD**, is a New Hampshire licensed psychologist who has been in private practice for 26 years. He has provided therapy, consultation, and evaluation for

children, adolescents, adults, couples, families, schools and businesses. IFS is an integral part of his practice and he is an assistant trainer for CSL. He also provides consultation and workshops in nonviolent communication to parents, educators, and health care providers. He is a senior Zen student of Sensei Nancy Mujo Baker. He currently leads and is co-founder of the Conway Community Sangha in New Hampshire, which was started in 1992 from his work with Thich Nhat Hanh and The Community of Mindful Living. He also studied in the Ridhwan School (Diamond heart-A.H. Almaas) for 10 years.

## To Apply

### Who May Apply:

- Module 1 is open to therapists and non-therapists alike.
- Module 2 is open to anyone who completes Module 1 or who has already completed a traditional Level 1 IFS training program.
- Preference will be given to those who apply to and enroll in both Module 1 and Module 2.

### Application Deadlines:

- Only applications from those applying to both Module 1 and 2 will be processed until August 1, 2009. Applications will be processed as they are received.
- Applications from those applying to either Module 1 or Module 2 will only be processed after August 1, 2009 (though you may submit your application at any time). Applications from those applying to both Module 1 and Module 2 will continue to be processed after August 1, 2009.
- PLEASE NOTE: Enrollment is limited and a great deal of interest has already been expressed in this training program. We recommend you apply as soon as possible.

**Application Form:** Please use the application form for this training found on our website. Contact CSL if you have any questions about how to submit it.

|                 |                  |                                  |
|-----------------|------------------|----------------------------------|
| <b>Schedule</b> | <u>Module 1:</u> | Weekend 1: November 6-8, 2009    |
|                 |                  | Weekend 2: January 8-10, 2010    |
|                 |                  | Weekend 3: March 26-28, 2010     |
|                 | <u>Module 2:</u> | Weekend 4: June 25-27, 2010      |
|                 |                  | Weekend 5: August 6-8, 2010      |
|                 |                  | Weekend 6: September 24-26, 2010 |
|                 |                  | Weekend 7: December 10-12, 2010  |

**Location** Bastyr University  
14500 Juanita Dr. NE  
Kenmore, WA 98028  
(800) 841-6721 ext. 3075  
[www.bastyr.edu](http://www.bastyr.edu)

(While this training takes place at Bastyr, it is not sponsored by Bastyr.)

## Daily Schedule

|                  | <u>Morning</u> | <u>AM Break</u> | <u>Afternoon</u> | <u>PM Break</u> |
|------------------|----------------|-----------------|------------------|-----------------|
| <b>Friday:</b>   | 9:30am-12:30pm | 15 minutes      | 2-6pm            | 15 minutes      |
| <b>Saturday:</b> | 9am-12:30pm    | 15 minutes      | 2-6pm            | 15 minutes      |
| <b>Sunday:</b>   | 9-11:30am      | None            | Noon-2pm         | None            |

## Continuing Education Credit

This training program is co-sponsored by The Center for Self Leadership and The Institute for Continuing Education. Continuing education credit is offered as listed. Credit is awarded on a session-by-session basis, with full daily attendance required. The processing fee is \$50.00 and covers all scheduled course sessions. Applications for continuing education credit will be available at the initial Course session, along with other pertinent continuing education information. If you have questions regarding continuing education, or for a listing of learning objectives, please contact The Institute for Continuing Education at 800-557-1950. Fax: 866-990-1960. Email: [instconted@aol.com](mailto:instconted@aol.com).

**Psychology:** The Institute for Continuing Education is an organization approved by the American Psychological Association (APA) to sponsor continuing education for psychologists. The Institute for Continuing Education maintains responsibility for the program and its content.

**Counseling:** The Institute for Continuing Education is an NBCC approved continuing education provider and a co-sponsor of this event. The Institute for Continuing Education may award NBCC approved clock/contact hours for programs that meet NBCC requirements. The Institute for Continuing Education maintains responsibility for this program and its content. NBCC Provider No. 5643

**Marriage/Family Therapy:** California Board of Behavioral Sciences Provider No. PCE 636.

**Social Work:** The Institute for Continuing Education is approved as a provider for continuing education by The Association of Social Work Boards (ASWB), through the Approved Continuing Education Program (ACE). Licensed social workers should contact their individual state jurisdiction to review current continuing education requirements for licensure renewal. The Institute for Continuing Education maintains responsibility for the program. ASWB Provider No. 1007.

## Texts

You are required to read two textbooks before the training begins:

Schwartz, RC (1995) Internal Family Systems Therapy, New York: Guilford Press, (800) 365-7006, ISBN 1-57230-272-0; Goulding, RA and Schwartz, RC (2002). Available through Amazon.com or other bookstores.

The Mosaic Mind: Empowering the Tormented Selves of Child Abuse Survivors, Oak Park IL: Trailheads Publications, The Center for Self Leadership, ISBN 0-9721480-1-9. Available at The Center for Self Leadership website store ([www.selfleadership.org](http://www.selfleadership.org)).

**Additional Reading:** Schwartz, RC (2001) Introduction to the Internal Family Systems Model, Oak Park IL: Trailheads Publications, The Center for Self Leadership, ISBN 0-97211480-0-0. Available at The Center for Self Leadership website store ([www.selfleadership.org](http://www.selfleadership.org)).

It is **strongly recommended** that all students read Introduction to the Internal Family Systems Model prior to the first class weekend. It is **required** reading for students with no prior experience with the IFS model. Class content is designed around the assumption that the reading is completed. For further reading and study, a selected bibliography is available on our website.

## Tuition and Fees

### Program Tuition:

1. If you apply for and enroll in only Module 1, your Program Tuition is \$1800.
2. If you apply for and enroll in only Module 2, your Program Tuition is \$2400.
3. If you apply for both Module 1 and Module 2 at the same time and enroll in both Modules, your total Program Tuition is \$3900.
4. If you apply for both Module 1 and Module 2 at the same time but decide later to enroll in only one Module, your Module 1 Program Tuition is \$1800 and your Module 2 Program Tuition is \$2400. These tuition rates may be retroactively applied.
5. If you apply for Module 1 and Module 2 at different times and enroll in both Modules (space permitting), your Module 1 Program Tuition is \$1800 and your Module 2 Program Tuition is \$2400 (\$4200 total).

**Room and Board:** not included.

**Program Deposit:** A \$350 Deposit is charged upon acceptance into the training as follows:

- If you apply for and are accepted into only Module 1
- If you apply for and are accepted into only Module 2.
- If you apply for and are accepted into both Module 1 and Module 2, you will be charged a \$350 deposit for each Module (\$700 total).

**Payment Plans:** Flexible payment plans are available for the balance of your Program Tuition. Please see the Program Application for details.

**Application Fee:** A non-refundable \$30 Application Fee is charged as follows:

- When you apply for both Module 1 and Module 2 at the same time (\$30 total).
- When you apply for Module 1 only (\$30 total).
- When you apply for Module 2 only (\$30 total).
- If you apply for Module 1 and Module 2 at different times, the \$30 non-refundable Application Fee will be charged for each Module (\$60 total).

### Discounts:

- CSL offers tuition discounts for groups as explained on the CSL website at [www.selfleadership.org](http://www.selfleadership.org). Please visit the website's Training FAQ section for more information.
- Some scholarship assistance is available; please see the website's Training FAQ section or contact CSL for more information.
- Costs for this training may be tax deductible, so be sure to consult your tax advisor.

### Withdrawals and Refunds

**Application Fee:** Application Fees are non-refundable.

#### Deposit

1. The deposit is refundable if withdrawal occurs 45 days or more before Module 1 begins.
2. The deposit is transferrable to another training program if withdrawal occurs 44-15 days before Module 1 begins (any difference between training program deposit amounts will be

refunded or charged, depending on the amounts involved). A transferred deposit must be used within 18 months of withdrawal.

3. The deposit is non-refundable and non-transferrable if withdrawal occurs 14 days or fewer before Module 1 begins, or if withdrawal occurs after Module 1 begins.

**Tuition:** If a participant withdraws after the training begins, the deposit is non-refundable and non-transferrable, and some or all of the remaining program tuition will be charged as follows:

**For Those Enrolled Only in Module 1 and Paying Its Tuition of \$1800:**

If withdrawal occurs after the first weekend of Module 1, 1/3 of Module 1 tuition (less the deposit already paid) is due. If withdrawal occurs after the second weekend of Module 1, the full Module 1 tuition (less the deposit already paid) is due.

**For Those Enrolled Only in Module 2 and Paying Its Tuition of \$2400:**

If withdrawal occurs after the first weekend of Module 2, 1/4 of Module 2 tuition (less the deposit already paid) is due. If withdrawal occurs after the second weekend of Module 2, 1/2 of Module 2 tuition (less the deposit already paid) is due. If withdrawal occurs after the third weekend of Module 2, the full Module 2 tuition (less the deposit already paid) is due.

**For Those Enrolled in Both Module 1 and Module 2 and Paying Tuition of \$3900:**

If withdrawal occurs after the first weekend of Module 1, 1/7 of the combined Module 1 and 2 tuition (less the \$700 deposit) is due. If withdrawal occurs after the second weekend of Module 1, 2/7 of the combined Module 1 and 2 tuition (less the \$700 deposit) is due. If withdrawal occurs after the third weekend of Module 1, 3/7 of the combined Module 1 and 2 tuition (less the \$700 deposit) is due. If withdrawal occurs after the first weekend of Module 2, 4/7 of the combined Module 1 and 2 tuition (less the \$700 deposit) is due. If withdrawal occurs after the second weekend of Module 2, 5/7 of the combined Module 1 and 2 tuition (less the \$700 deposit) is due. If withdrawal occurs after the third weekend of Module 2, the full combined Module 1 and Module 2 tuition (less the \$700 deposit).

**For those enrolled in Module 1 and Module 2 and Paying Its Tuition of \$4200:**

If withdrawal occurs after the first weekend of Module 1, 1/7 of the combined Module 1 and 2 tuition (less the \$700 deposit) is due. If withdrawal occurs after the second weekend of Module 1, 2/7 of the combined Module 1 and 2 tuition (less the \$700 deposit) is due. If withdrawal occurs after the third weekend of Module 1, 3/7 of the combined Module 1 and 2 tuition (less the \$700 deposit) is due. If withdrawal occurs after the first weekend of Module 2, 4/7 of the combined Module 1 and 2 tuition (less the \$700 deposit) is due. If withdrawal occurs after the second weekend of Module 2, 5/7 of the combined Module 1 and 2 tuition (less the \$700 deposit already paid) is due. If withdrawal occurs after the third weekend of Module 2, then the full Module 1 and 2 tuition (less the \$700 deposit already paid) is due.

**Payment Plan Carrying Fee:** Payment Plan Carrying Fees are non-refundable.

**ADA:** If you have special needs, call The Center for Self Leadership.

## Parking

**Parking Permits are REQUIRED:** Attached below are parking permits for you to use and you can duplicate these for the duration of the training program. **Bastyr requires a permit to be displayed in your car while parked in their parking lot. If you lose them, more are available in boxes in the parking lot.**

## Directions

Bastyr University, located in the Greater Eastside area of Seattle, Washington (Kenmore) is easily accessible by car.

**Please see the attached maps for more specific directions on where to park and finding your training.**

### Southbound on I-5 (from Vancouver):

1. Take EXIT 177 (Lake Forest Park) onto Ballinger Road NE.
2. Follow Ballinger Road NE for about 3 miles to Hwy 522, also called Bothell Way.
3. Turn LEFT on Hwy 522/Bothell Way to 68th Avenue NE in Kenmore.
4. Turn RIGHT on 68th Ave NE, which becomes Juanita Drive NE, and follow it south to sign on the right indicating Bastyr University (NE 145th).
5. Turn RIGHT and follow drive until it forks. Continue straight ahead until you reach Bastyr University.

### Northbound on I-5 (from Portland):

1. Take EXIT 175 (NE 145th) and turn RIGHT at the end of the exit ramp onto NE 145th.
2. Follow NE 145th to Hwy 522/Bothell Way.
3. Follow instructions #3-5 above.

### Southbound on I-405:

1. Take EXIT 23/Hwy 522 (third Bothell exit).
2. Follow Hwy 522 west to 68th Ave NE in Kenmore.
3. Turn LEFT; continue on 68th Ave NE which becomes Juanita Drive NE. Follow it south to sign on the RIGHT indicating Bastyr University.
4. Turn RIGHT and follow drive until it forks. Continue straight ahead until you reach Bastyr University.

### Northbound on I-405 (from the airport):

1. If coming from Sea-Tac Airport, follow the signs to the freeway, then specifically to I-405 North.
2. Once on I-405 North: Take EXIT 20A (NE 116th) and turn LEFT at the end of the exit ramp onto NE 116th (this is a northbound exit only).
3. Follow NE 116th to the second signal light (98th Ave NE) and continue through this intersection. You are now on Juanita Drive NE.
4. Follow Juanita Drive NE for 4 miles to sign on your LEFT indicating Bastyr University (NE 145th).
5. Turn LEFT and follow drive until it forks. Continue straight ahead until you reach Bastyr University.

### Shuttle Service to and from SeaTac Airport:

Airport Express (Downtown sites only)  
(206) 628-6088

Shuttle Express (door to door)  
1-800-487-7433

## Lodging

### Baymont Hotel

12223 NE 116th St  
Kirkland, WA 98034  
(425) 822-2300

From \$93.00/night

*Mention you are attending a*

*Bastyr event for a discounted rate.*

[baymontinns.com](http://baymontinns.com)

### Hotel Nexus Seattle

2140 N. Northgate Way  
Seattle, WA 98133  
(206) 365-0700

Bastyr rate \$115.00/night

*Mention you are attending a*

*Bastyr event for a discounted rate.*

[hotelnexusseattle.com](http://hotelnexusseattle.com)

**Courtyard Seattle Kirkland**

3.2 miles from training site  
 11215 NE 124th Street  
 Kirkland, WA 98034-4302  
 (425) 602-3200  
 From \$99.00/night  
[marriott.com](http://marriott.com)

**Country Inn & Suites**

4.0 miles from training site  
 19333 North Creek Pkwy  
 Bothell, WA 98011  
 (425) 485-5557  
 From \$116.00/night  
[countryinns.com](http://countryinns.com)

**Holiday Inn Express**

4.3 miles from training site  
 14115 Aurora Avenue North  
 Seattle, WA 98133  
[hiexpress.com](http://hiexpress.com)

**Comfort Inn Kirkland**

3.8 miles from training site  
 12204 NE 124th Street  
 Kirkland, WA 98034  
 (425) 821-8300  
 From \$109.00/night  
[comfortinn.com](http://comfortinn.com)

**Motel 6**

4.7 miles from training site  
 12010 120th Pl. NE  
 Kirkland, WA 98034  
 (425) 821-5618  
 From \$72.00/night  
[motel6.com](http://motel6.com)

**Comfort Inn and Suites Bothell**

5.8 miles from training site  
 1414 228th St SE  
 Bothell, WA 98011  
 425-402-0900  
 From \$107.00/night  
[comfortinn.com](http://comfortinn.com)

**Residence Inn/Marriott**

7.1 miles from training site  
 11920 NE 195th St.  
 Bothell, WA 98011  
 (425) 485-3030  
 From \$129.00/night  
[marriott.com](http://marriott.com)

**Woodmark Hotel**

7.5 miles from training site  
 1200 Carillon Pt  
 Kirkland, WA 98033  
 (425) 822-3700  
[thewoodmark.com](http://thewoodmark.com)

**Meals**

Bastyr has an award-winning, vegetarian cafeteria that serves breakfast, lunch and dinner, and which will be open at least some of the time while this training is in progress. At the time of this writing, Bastyr reports that it will be open at least during the November 2009 and January 2010 weekends. It is “buffet-style” and cash is welcome. The schedule is subject to change, and you may contact Bastyr regarding the schedule for future weekends. Bastyr also has vending machines with healthy snacks and a Bookstore that offers light snacks and beverages. Additionally, the restaurants noted below may be of interest to you.

**Starbucks**

14130 Juanita Dr NE  
 Bothell, WA 98011  
[starbucks.com](http://starbucks.com)

**Starbucks**

7750 NE Bothell Way  
 Kenmore, WA  
[starbucks.com](http://starbucks.com)

**Kidd Valley**

6434 NE Bothell Way  
 Kenmore, WA 98028  
 (425) 485-5514  
[kiddvalley.com](http://kiddvalley.com)

**Mia Roma**

7620 NE Bothell Way  
 Kenmore, WA 98028  
 (425) 486-6200  
[miaromaitalian.com](http://miaromaitalian.com)

**Subway**

14130 Juanita Dr NE # 103  
 Bothell, WA 98011  
 (425) 823-4332  
[subway.com](http://subway.com)

**Kami Teriyaki**

14130 Juanita Dr NE # 102  
 Bothell, WA 98011  
 (425) 823-4777

**Thai Kitchen**

7828 NE Bothell Way  
 Kenmore, WA 98028  
 (425) 806-3929  
[thaikitchenkenmore.com](http://thaikitchenkenmore.com)

**Ichiban Teriyaki**

6524 NE 181<sup>st</sup> St.  
 Kenmore, WA  
 (425) 481-7585

**Mazatlan**

7826 NE Bothell Way  
 Kenmore, WA  
 (425) 485-7778

**McDonald's**  
7234 NE Bothell Way  
Kenmore, WA  
(425) 485-5535

**Lake Washington Roaster &  
Ale House**  
6161 NE 175<sup>th</sup> St.  
Kenmore, WA  
(425) 482-2670

**Toshi's Teriyaki**  
6830 NE Bothell Way  
Kenmore, WA  
(425-483-6318

**Plaza Garcia Family  
Mexican Restaurant**  
12108 Juanita Dr NE  
Kirkland, WA 98034  
(425) 814-3012

**Acapulco Fresh Mexican  
Grill**  
6016 NE Bothell Way  
Kenmore, WA 98028  
(425) 482-0334

**Empire Bar & Grill**  
8020 NE Bothell Way  
Kenmore, WA 98028  
(425) 486-2098

**Fortune Inn**  
6825 NE 170<sup>th</sup> St.  
Kenmore, WA 98028  
(425) 488-0220

**Jack in the Box**  
6100 NE Bothell Way  
Kenmore, WA 98028  
(425) 486-6856

**Tai-Ho Restaurant**  
6312 NE Bothell Way  
Kenmore, WA 98028  
(425) 485-4020

## **THE CENTER FOR SELF LEADERSHIP**

Phone: 708.383.2519 or 2659

Fax: 708.383.2399

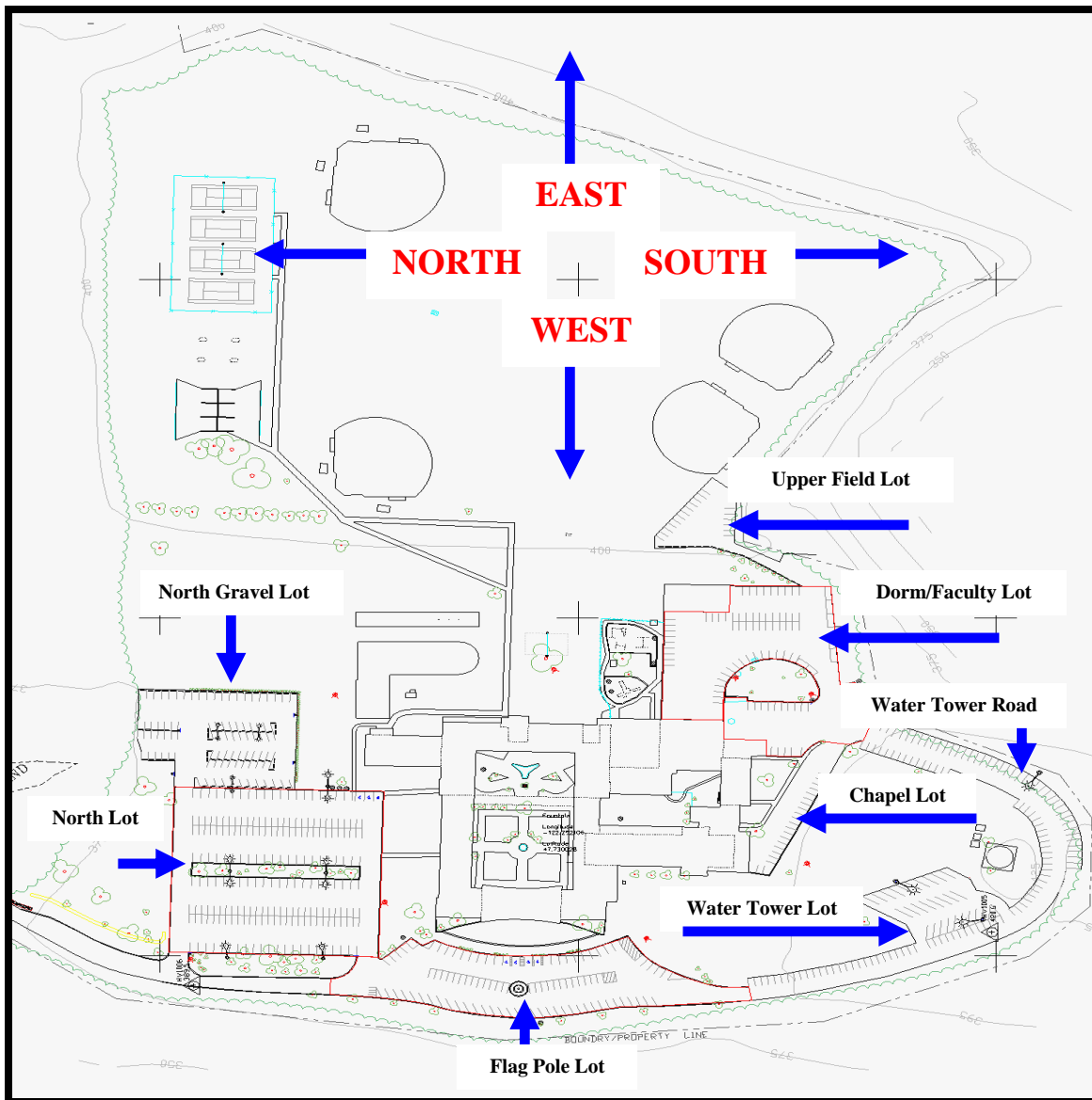
P.O. Box 3969, Oak Park, IL 60303

[training@selfleadership.org](mailto:training@selfleadership.org)

## Where to park and finding your training:

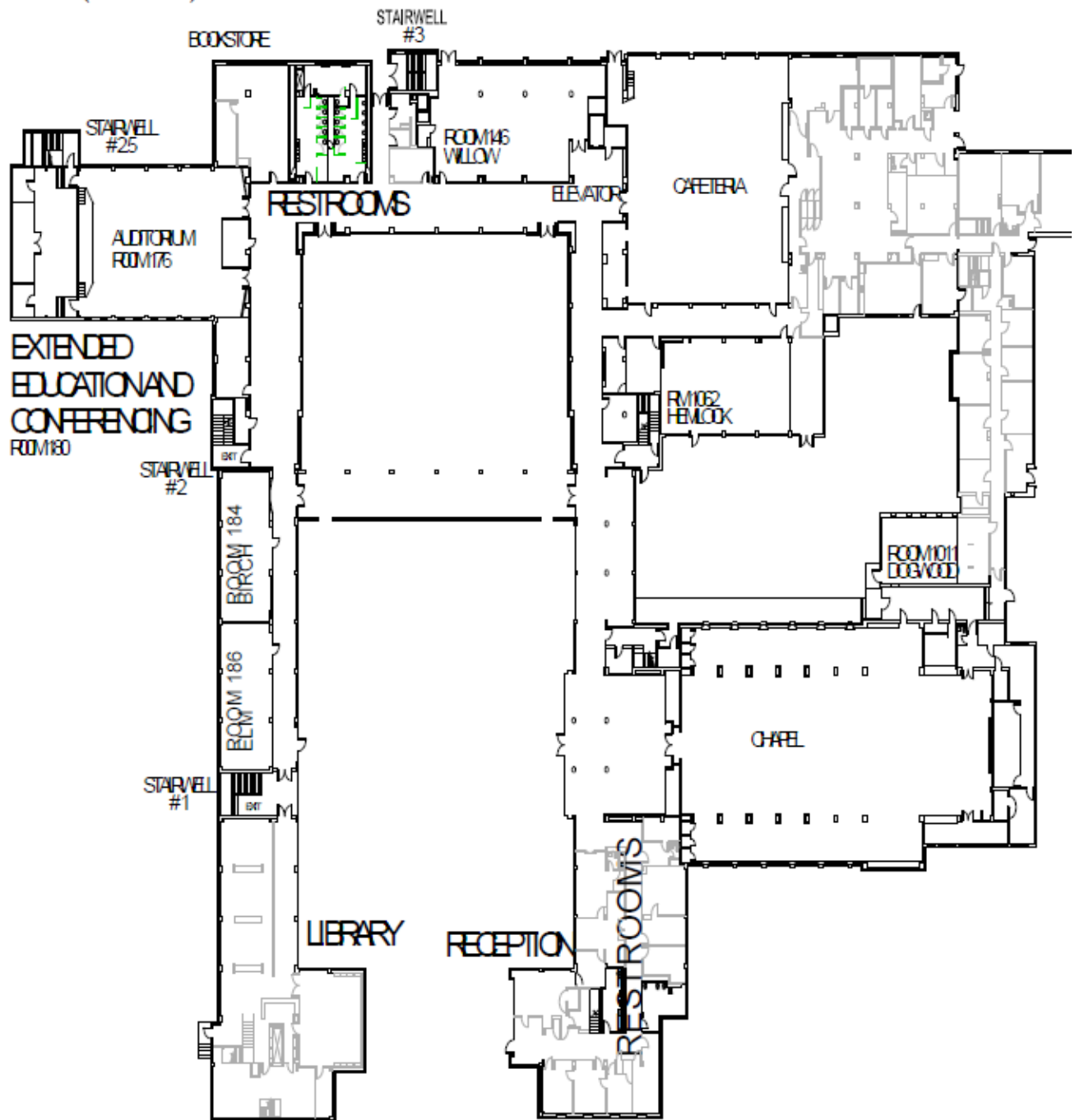
The main driveway for the University has you entering the campus grounds from the north. The first parking lot you will come to will be the North Lot on your left hand side. You may park in any of the lots listed on this map. **Please place your parking permit on the dash board of your car on Friday as the parking lots are monitored.** Bastyr University does not monitor the parking lots on Saturday and Sunday so you don't have to have the permit on your car dash board.

The main entrance to the campus is off of the Flag Pole Lot. There are 12 large columns holding up a canopy at the main entrance. By these columns is where you will locate the sign board which will have a sign that will direct you into the building for your seminar. See the map below



# BASTYR UNIVERSITY FLOOR PLANS

## FIRST (MAIN) FLOOR



# BASTYR

UNIVERSITY

Date: \_\_\_\_\_ Time: \_\_\_\_\_

Your vehicle, at all times, is REQUIRED to have a Bastyr ID decal on the windshield or this free Guest ID Pass on the dashboard.

Please, no B.U. students or employees in our visitor's spaces. Thank you.

- I am a prospective Student
- I have a scheduled visit with: \_\_\_\_\_
- I am here for this Bastyr Event: \_\_\_\_\_
- I am:  visiting the cafeteria  visiting the garden
- I am a Bastyr Student/Employee & have a temporary vehicle.  
This is my regular Bastyr parking ID: # \_\_\_\_\_

\*Bastyr is private and not affiliated with St. Edwards State park. Dogs must be on LEASH at ALL TIMES per KING COUNTY regulations.

# BASTYR

UNIVERSITY

Date: \_\_\_\_\_ Time: \_\_\_\_\_

Your vehicle, at all times, is REQUIRED to have a Bastyr ID decal on the windshield or this free Guest ID Pass on the dashboard.

Please, no B.U. students or employees in our visitor's spaces. Thank you.

- I am a prospective Student
- I have a scheduled visit with: \_\_\_\_\_
- I am here for this Bastyr Event: \_\_\_\_\_
- I am:  visiting the cafeteria  visiting the garden
- I am a Bastyr Student/Employee & have a temporary vehicle.  
This is my regular Bastyr parking ID: # \_\_\_\_\_

\*Bastyr is private and not affiliated with St. Edwards State park. Dogs must be on LEASH at ALL TIMES per KING COUNTY regulations.

# BASTYR

UNIVERSITY

Date: \_\_\_\_\_ Time: \_\_\_\_\_

Your vehicle, at all times, is REQUIRED to have a Bastyr ID decal on the windshield or this free Guest ID Pass on the dashboard.

Please, no B.U. students or employees in our visitor's spaces. Thank you.

- I am a prospective Student
- I have a scheduled visit with: \_\_\_\_\_
- I am here for this Bastyr Event: \_\_\_\_\_
- I am:  visiting the cafeteria  visiting the garden
- I am a Bastyr Student/Employee & have a temporary vehicle.  
This is my regular Bastyr parking ID: # \_\_\_\_\_

\*Bastyr is private and not affiliated with St. Edwards State park. Dogs must be on LEASH at ALL TIMES per KING COUNTY regulations.

# BASTYR

UNIVERSITY

Date: \_\_\_\_\_ Time: \_\_\_\_\_

Your vehicle, at all times, is REQUIRED to have a Bastyr ID decal on the windshield or this free Guest ID Pass on the dashboard.

Please, no B.U. students or employees in our visitor's spaces. Thank you.

- I am a prospective Student
- I have a scheduled visit with: \_\_\_\_\_
- I am here for this Bastyr Event: \_\_\_\_\_
- I am:  visiting the cafeteria  visiting the garden
- I am a Bastyr Student/Employee & have a temporary vehicle.  
This is my regular Bastyr parking ID: # \_\_\_\_\_

\*Bastyr is private and not affiliated with St. Edwards State park. Dogs must be on LEASH at ALL TIMES per KING COUNTY regulations.